

This brochure is for appearance only.  
Please consult blueprints for actual layout.

# THE NEW YORK

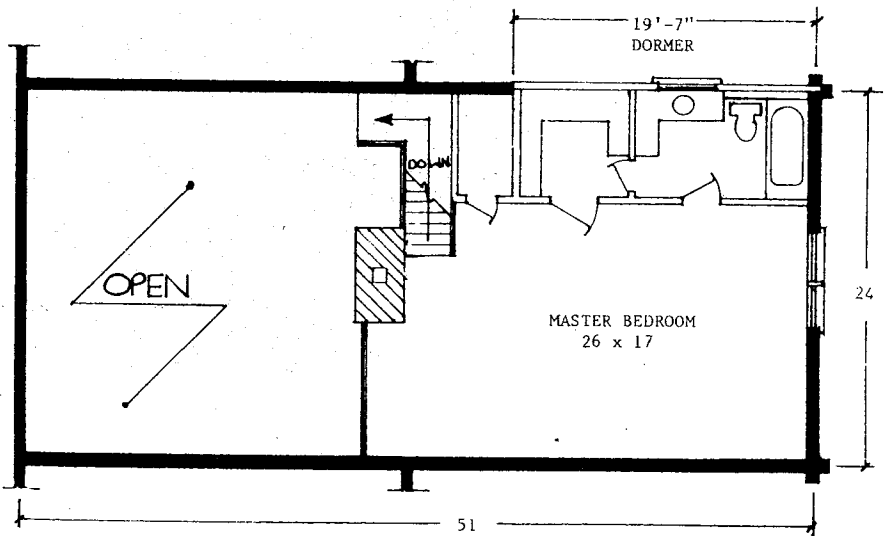
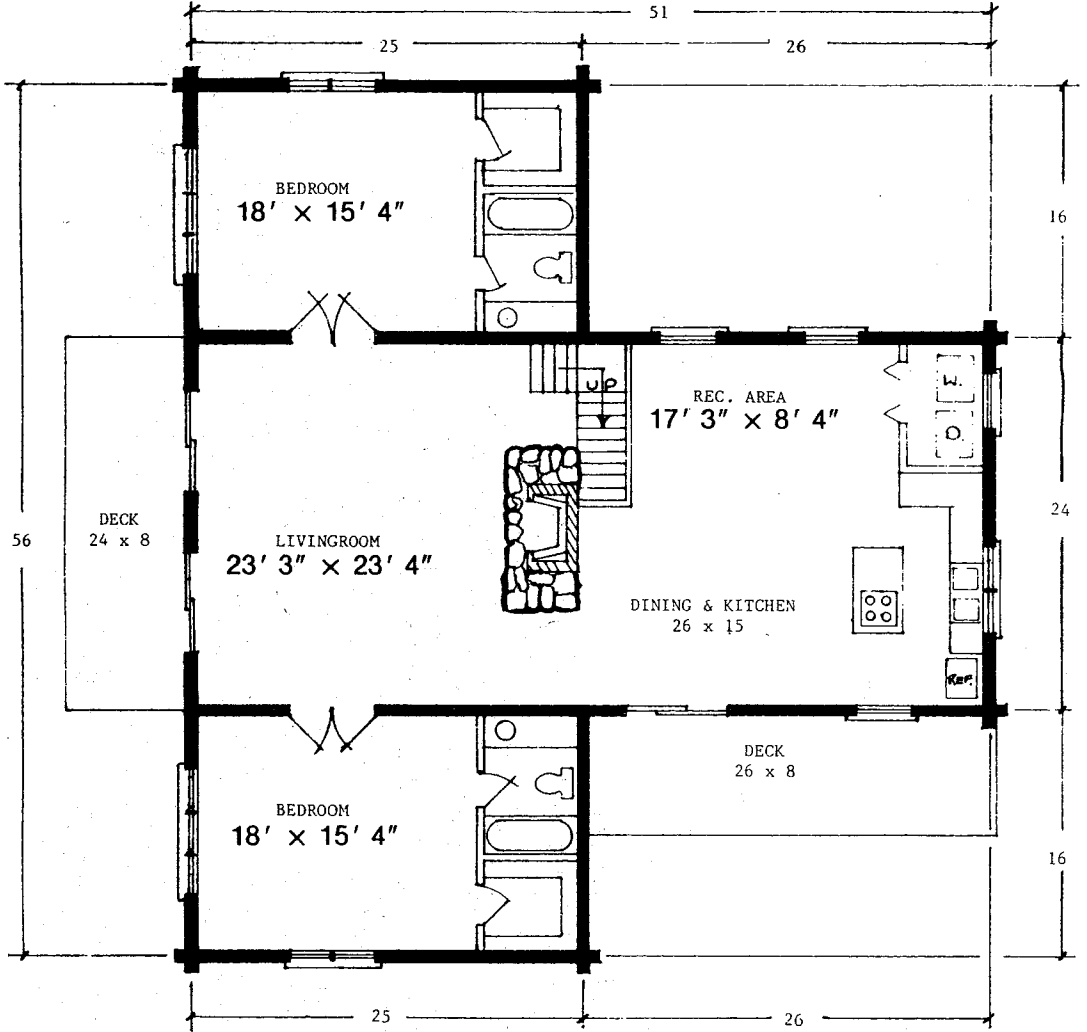
503



7810 Ballantyne Commons Parkway  
Suite 300

Charlotte, NC 28277

Phone: (704) 602-3035 • Fax: (704) 319-2250



**SQUARE FOOTAGE:**

First Floor..... 2024'  
 Second Floor.. 672'  
 TOTAL..... 2696'  
 Deck..... 400'

YOUR AMERICAN LOG HOMES DEALER IN THIS AREA IS

